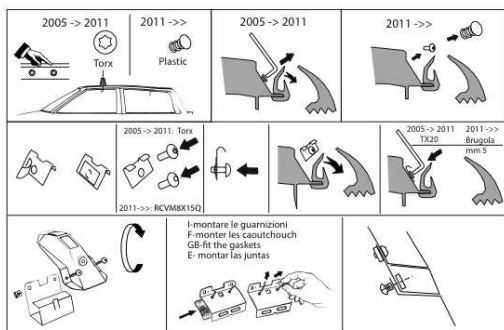
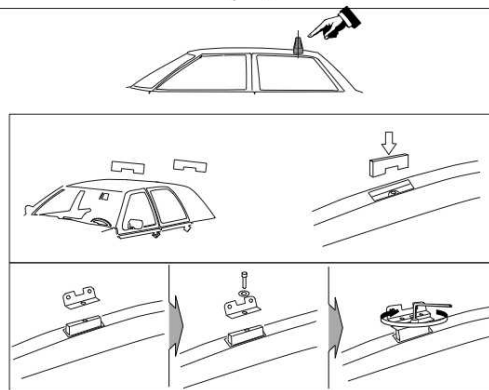
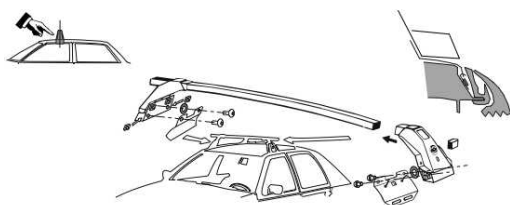
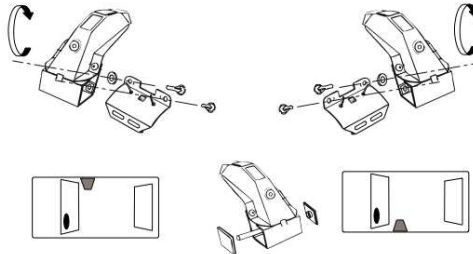


L1118N RENAULT CLIO 3 porte modello 2005
(3° serie)



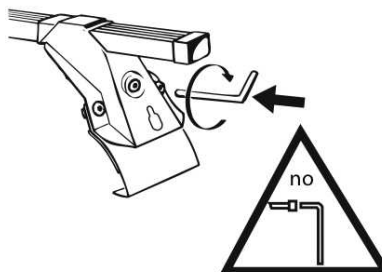
I-montare gli attacchi anteriori GB-fit the front clamps E- ajustar las pletinas delantera.



I- Per stringere, usare la chiave come indicato nel disegno. (Non si assumono responsabilità per danni causati dall'impiego di chiavi diverse da quella in dotazione al prodotto).

F- Pour serrer, utiliser la cle comme indique ci dessous.
GB-For tightening, please use the wrench as per the drawing.

D- Zum Anziehen benutzen Sie bitte den Inbusschlüssel, nur wie auf dem Bild dargestellt.
E- Para el correcto ajuste, utilizar la llave fija tal y como se indica en la imagen.



LA PREALPINA srl

INDUSTRIA ACCESSORI AUTO
10040 VOLVERA (Torino) ITALY
Strada Orbassano, 47
tel. 011 985 06 83, Fax 011 985 72 76
<http://www.laprealpina.net>, e-mail: lp@laprealpina.it

12/04/2012
Rev. 1