

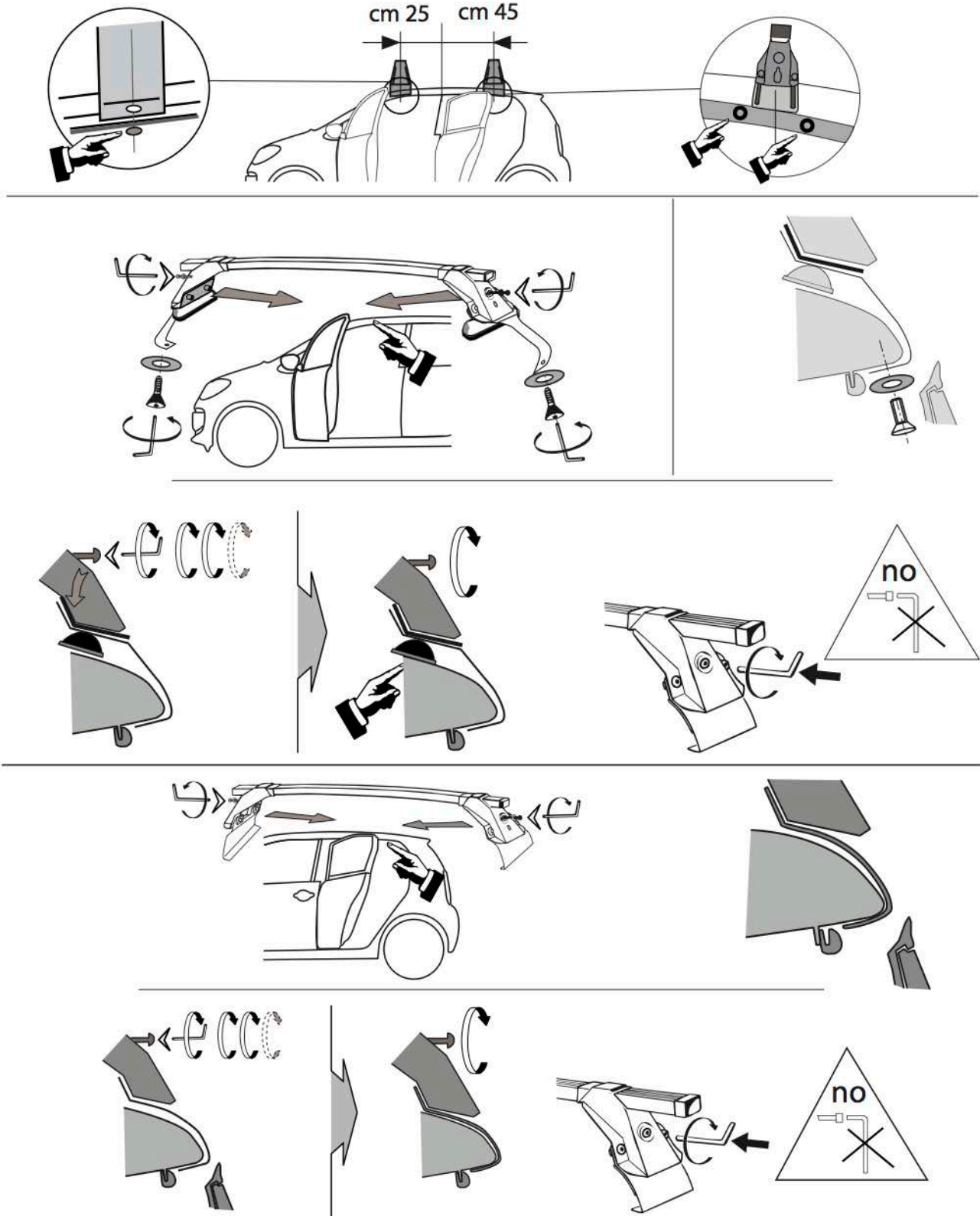
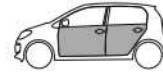
L1332

SEAT Mii 5 porte 2012

ŠKODA Citygo 5 porte 2012

VOLKSWAGEN up! 5 porte 2012

Patent pending



LA PREALPINA srl

INDUSTRIA ACCESSORI AUTO
10040 VOLVERA (Torino) ITALY
Strada Orbassano, 47
tel. 011 985 06 83, Fax 011 985 72 76
<http://www.laprealpina.net>; e-mail: lp@laprealpina.it

15/10/2012
Rev. 1