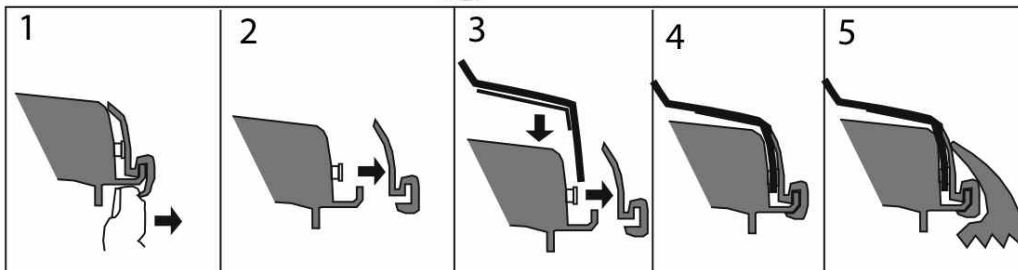
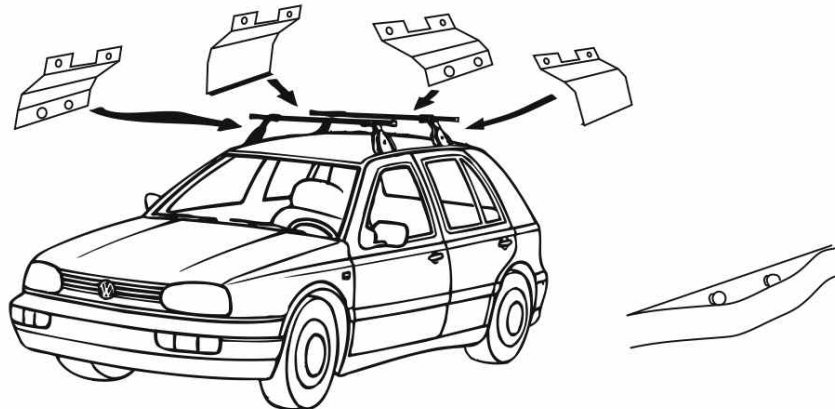
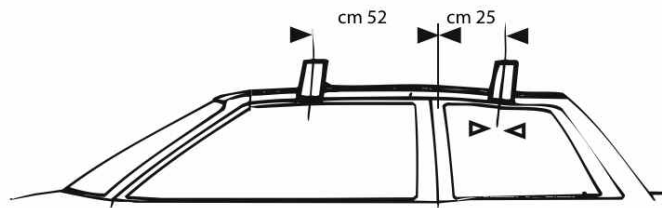


L958 VW GOLF 4 +98 3 porte



I- Per stringere, usare la chiave come indicato nel disegno. (Non si assumono responsabilità per danni causati dall' impiego di chiavi diverse da quella in dotazione al prodotto.  
 F- Pour serrer, utiliser la cle comme indique ci dessous.  
 GB-For tightening, please use the wrench as per the drawing.  
 D- Zum Anziehen benutzen Sie bitte den Inbusschlüssel, nur wie auf dem Bild dargestellt.  
 E- Para el correcto montaje, utilizar la llave fija tal y como se indica en la imagen.

